

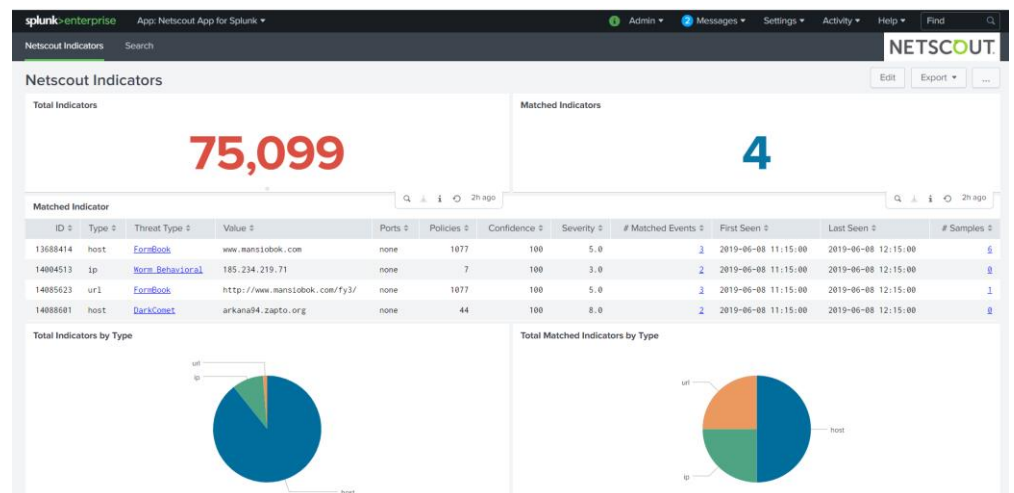
Case Study: Netscout Threat Intelligence

Customer Challenge

Netscout Threat Intelligence enables customers to directly benefit from the depth and breadth of threat vault data collection and analysis and offers this visibility through various platforms. Netscout Threat Vault contains more than billion threat samples and thousands of indicators, to use this enormous amount of data + Splunk's existing security logs to detect threat and identify threat in real-time was the main challenge.

The CREST Difference in 90 Days

The Splunk App for Netscout combines with Splunk Add-on for Netscout allows user to use power of Netscout threat intelligence on Splunk data. Netscout worked with Crest Data System to provide the power to Splunk user to analyse and detect potential vulnerabilities and threats to the system via incidents present in the Splunk logs. The Splunk App also contains Overview Dashboard for user to look at the overview of the incidents happened and their respective threat events it found in Splunk. At the same time allows the user to drilldown to see previous sample threats available in Netscout Threat Vault allowing user to go in depth of the potential threat events.



Crest Data Systems is a leading App Development, Managed Services, and Professional Services Partner of Splunk. Crest has built 250+ Splunk Apps & Technology Add-ons (TA) for customers ranging from Global Fortune 500 companies to Silicon Valley Startups in IT Ops, Security, and IoT. With a dedicated team of Splunk-certified Engineers, Administrators, and Consultants across the US and India, Crest provides Professional Services & 24x7 Managed Support Services to Splunk Enterprise & Cloud to customers across the US, Europe, and APAC.